

# *Connecting to the CoB Terminal Servers*

*Provided by: CoB Technology Group*

*Revised: 4/8/2008*

## **Abstract**

This tutorial will show you how to connect to the College of Business Terminal Servers from an off campus location. The terminal servers mirror the software that is available in the CoB computer labs as well as give you access to your “I:” drive. This tutorial is primarily for users with the Windows XP client Operating System. If you are using Windows 95/98/NT/2000, please use section two provided at the end of this document.



## Section One

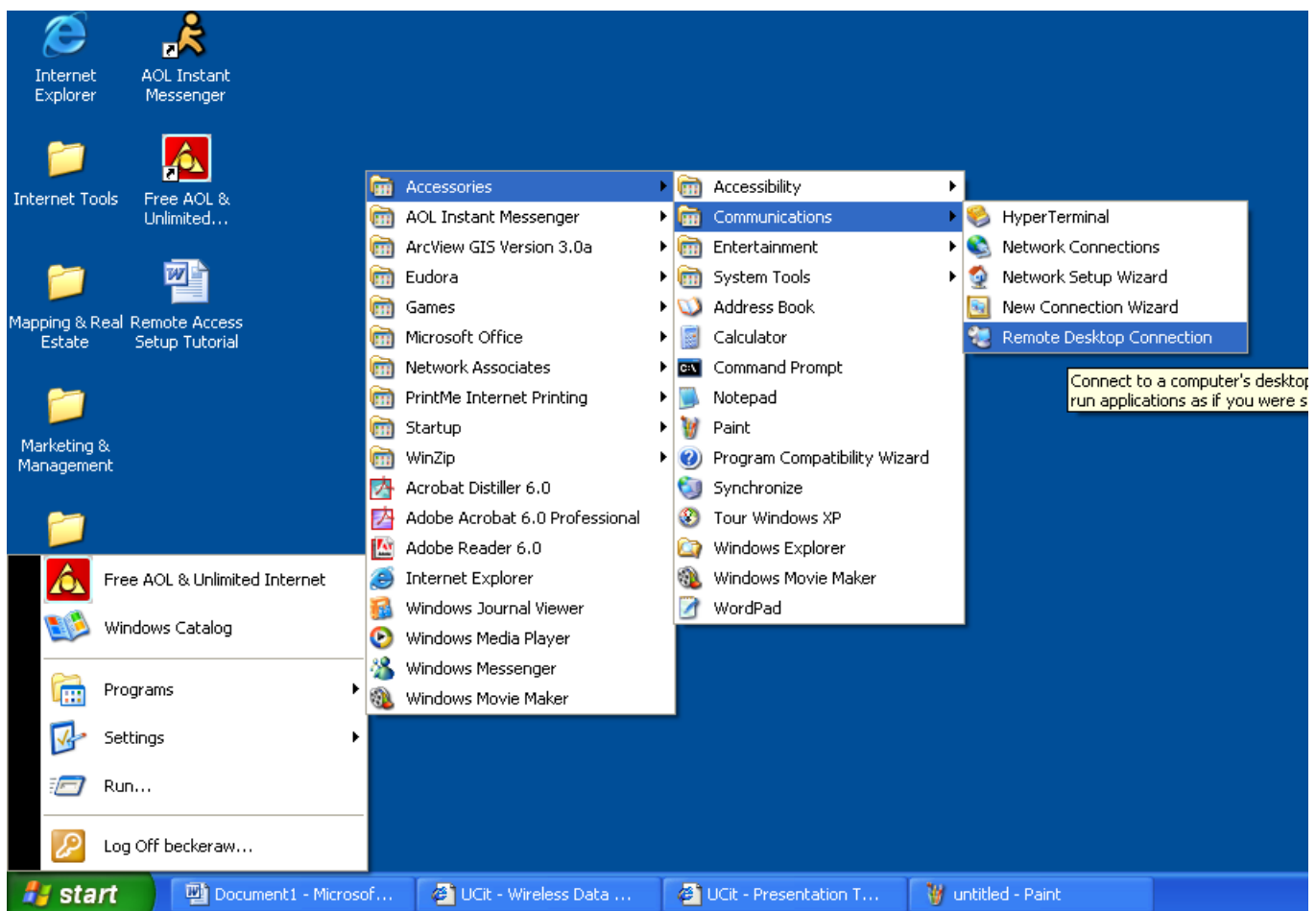
This section is for users who have Windows XP as their base Operating System.

### STEP 1:

You need to be logged into UC's network either via Remote Access or the VPN client to access the terminal servers. Please refer to the Remote Access and VPN setup guides if you need help.

After VPN installed and running, you will you will need to hit the [start](#) key and move the mouse up to programs. Then from programs you will go to [accessories](#) and then to [communications](#). From communications you should go out one more to [Remote Desktop Connection](#). Click on "Remote Desktop Connection" (Refer to Figure 1.1)

FIGURE 1.1





**STEP 2:**

The second step is to fill in the name of the server that you are trying to reach. What you will type in the box below is as follows:

**appserve.business.uc.edu**

After you enter the address then click [Connect](#).



**STEP 3:**

Now that you have clicked connect on the pervious screen a gray screen will now appear asking you to login. You should treat this login page as if you were sitting in the lab.

Remember:

Username: Same as Blackboard

Password: Last 6 of student ID.  
(Unless you changed in the lab)

Domain: Business



Once you click OK, you will term served in.

---

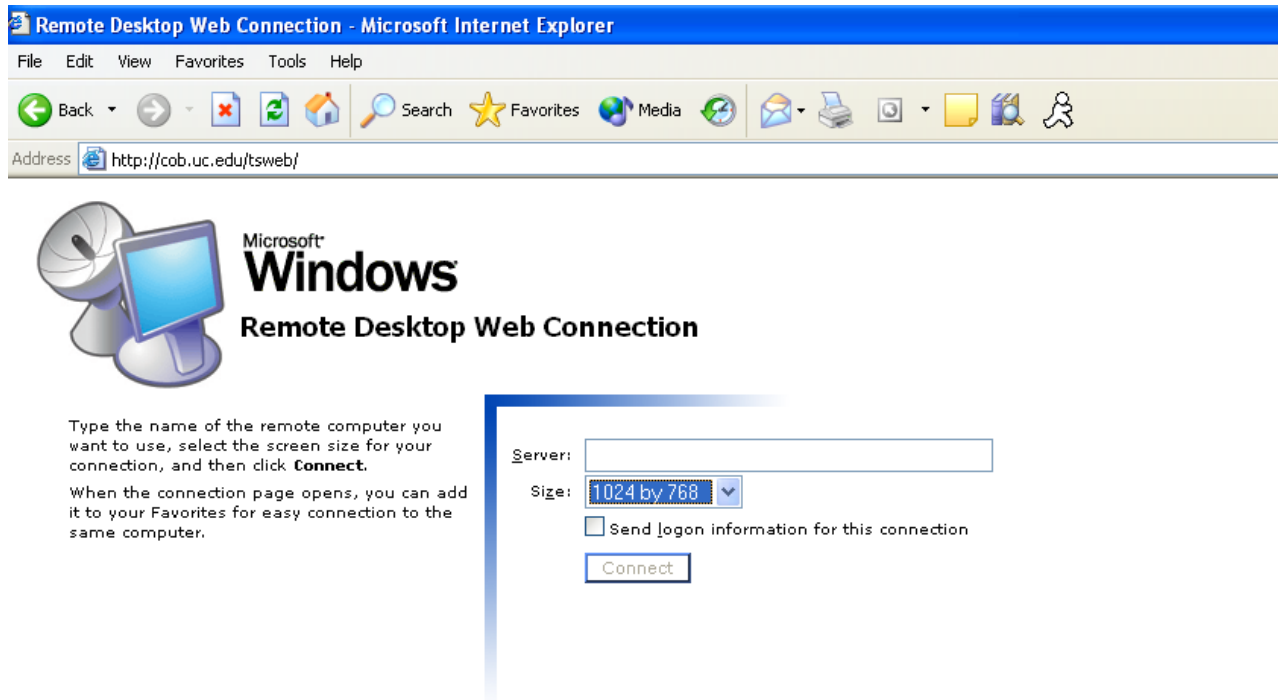


## Section Two

If you are running a version of Windows (such as Windows 95/98/NT/2000) that does not have the Remote Desktop Option

Go to this web address:

<http://cob.uc.edu/tsweb>



When you get to the page put the server name in:

Server: **[appserve.business.uc.edu](http://appserve.business.uc.edu)**

Now that you have clicked connect, a gray screen will now appear asking you to login. You should treat this login page as if you were sitting in the lab.

Remember:

Username: Same as Blackboard

Password: Last 6 of student ID.  
(Unless you changed in the lab)

Domain: Business