

Enabling Remote Desktop Connection (RDC)

Provided by: CoB Technology Group

Revised: 4/08/2008

Abstract

This document shows users how to enable Remote Desktop Connection for PC computers only.



Important – **YOU MUST BE CONNECTED TO THE UC NETWORK TO Connect via RDC** (if you are at home, you can connect to the UC Network via dial-up with [UC's Remote Access](#) or by the [VPN Client](#) if you use a different ISP (road runner/zoomtown)).

Note: You can only enable RDC on Windows XP Client Machines. Also, you can only connect by default to your RDC if you have Windows XP. If you have Windows 95/98/2000 then you must download the RDC Client Software. You can do so by clicking [here](#). If you have a paper copy of this document the link is: <http://www.microsoft.com/windowsxp/downloads/tools/rdclientdl.mspx>

ON THE MACHINE YOU ARE TRYING TO CONNECT TO DO THE FOLLOWING:

- 1.) First you must right click on "My Computer" and click the properties option.

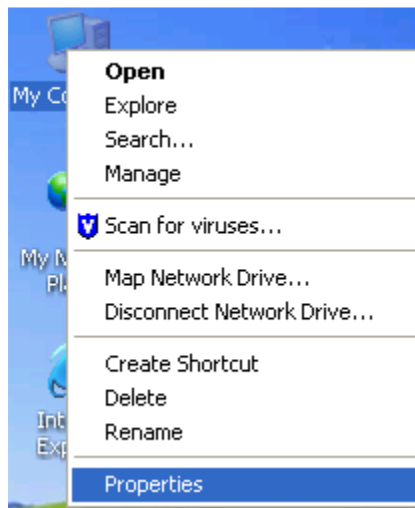


Fig 1

- 2.) Once the system properties dialog box is open click the remote tab. Make sure that the "Allow users to connect remotely to this computer" check box is CHECKED as seen in Fig 2.1. Once you check the box, you will receive a pop up as shown in Fig 2.2. Click ok.

Note: In figure 2.1, underneath the box you checked it says your full computer name. Write this down or remember it because you will need to type it in later!

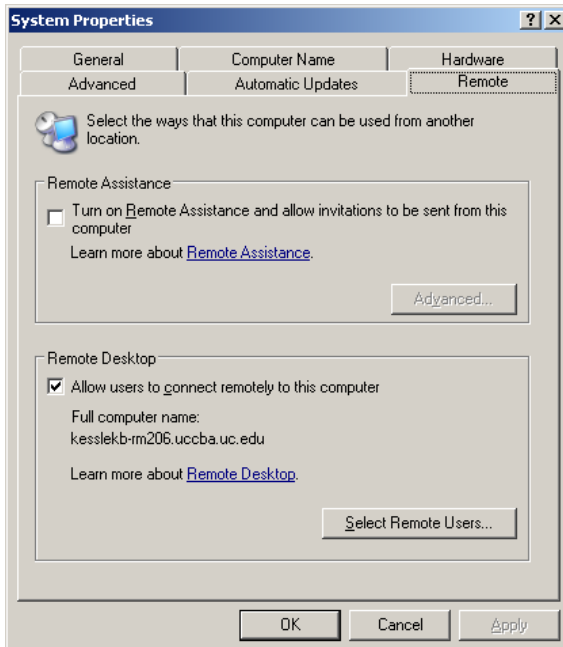


Fig 2.1

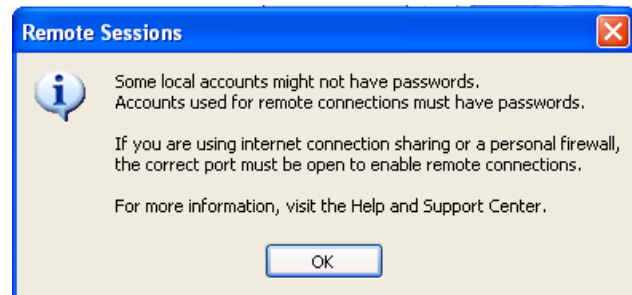


Fig 2.2

ON THE MACHINE YOU ARE CONNECTING FROM DO THE FOLLOWING:

- 1.) If you have Windows XP on your machine continue to step two. If you have Windows 95/98/2000 then you must download the RDC Client as stated above. That link is: <http://www.microsoft.com/windowsxp/downloads/tools/rdclientdl.msp>. Once installed go to step two.
- 2.) Once your computer is Remote Desktop enabled, you can connect to it via Remote Desktop Connection. This can be found by going to Start -> All Programs -> Accessories -> Communications -> Remote Desktop Connection. Once you click on this you will see a dialog box as shown in Fig 3. Type your whole computer name in. For example if your computer name is kesslekb-rm206.uccba.uc.edu (as it is in Figure 2.1) then you need to type in kesslekb-rm206.uccba.uc.edu in the dialog box. Click connect.

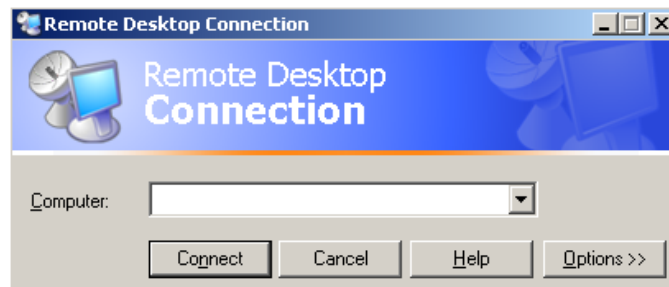


Fig 2

3. The next screen asks for your logon credentials. This should be familiar to you. Just supply the same logon credentials that you would if you were in your office. That's it you're finished.